

Wendy Allison Snr and Jnr Soccer fields

 14,000 m²



We had been asked by MBRC Moreton Bay Regional Council to engage in the rebuilding of Wendy Allison Soccer field precinct which contains 1 senior full size field and 4 junior fields

The process included:

- WHS documentation including Work Method Statement, Site Specific Safety Plan, Construction Schedule
- Service location was required before commencing any works, DIAL BEFORE YOU DIG, plans
- Site establishment and construction fencing to surround site
- Soil tests had been provided by MBRC and soil amendments applied as per the recommendations
- Installation of temporary irrigation system is to be installed prior to turf laying
- Supply and apply soil conditioner, RRA Organics
- Bleccavate surfaces
- Laser Level Field including Brush and Final Trim
- Supply and Install Hanceys Turf Premium Wintergreen turf
- Supply and apply Ronstar and starter fertiliser
- Supply and apply pesticide as required
- Supply and apply controlled release fertiliser

Maintenance:

- 1st mow and Sweep
- 2nd Mow, Sweep and Topdressing 10mm
- 3rd Mow and Sweep
- 4th Mow, Sweep
- 5th Mow Sweep and Topdressing 10mm
- Maintenance of field for 13 weeks included temporary fence line, mowing and whipping
- Line marking ready for play
- All machinery used during the works was to be of low compaction
- During turf maintenance period the Contractor was to guarantee 100% coverage and establishment of turf through this period
- We had to provide warranties and certificates for turf and materials used in this project
- "As Constructed Drawings"

AS THIS SITE WAS SENSITIVE TO ENVIRONMENTAL AND SAFETY REGULATIONS BELOW IS AN OUTLINE WE IMPLEMENT THE FOLLOWING SAFETY PROCESSES AND ACTIONS:

- Site log sheet
- Site induction
- SWMS
- JSA
- PPE
- Safety barrier fencing with dust proof shade cloth
- Site safety signs
- Machinery inspections
- Daily tool box talks
- Mandatory flashing lights and reverse beeper on site equipment
- Mandatory shields and guards fitted to equipment
- Licenced and experienced equipment operators
- Safety policy
- Environmental policy
- Detailed Health and Safety manual with all relevant information easy to refer to and abide by

ENVIRONMENTAL CONSIDERATIONS
SITE SPECIFICS:

- Specified areas for loading and unloading
- Buffer zones
- Coir logs or Silt fencing for silt/erosion control

PROGRAM OF WORKS:

Day 1 _____ Site meeting with stakeholders

Day 2 _____ Site setup/safety/GPS pick up/service location etc

Day 3 _____ Herbicide treatments (10 days for die off)

Day 14, 15 _____ Cultivation and shaping

Day 16-20 _____ Earthworks- Import material, cultivation, amendments and shape

Day 21 _____ Final trim and consolidate

Day 22 _____ Pressure test irrigation system

Day 23, 24 _____ Supply, install turf and rolling

Day 24 _____ Fertiliser and pre-emergence

Day 25-90 _____ Grow in mowing and maintenance program

Day 40 _____ Rolling

Day 40 _____ Top dress 1

Day 54 _____ Top Dress 2

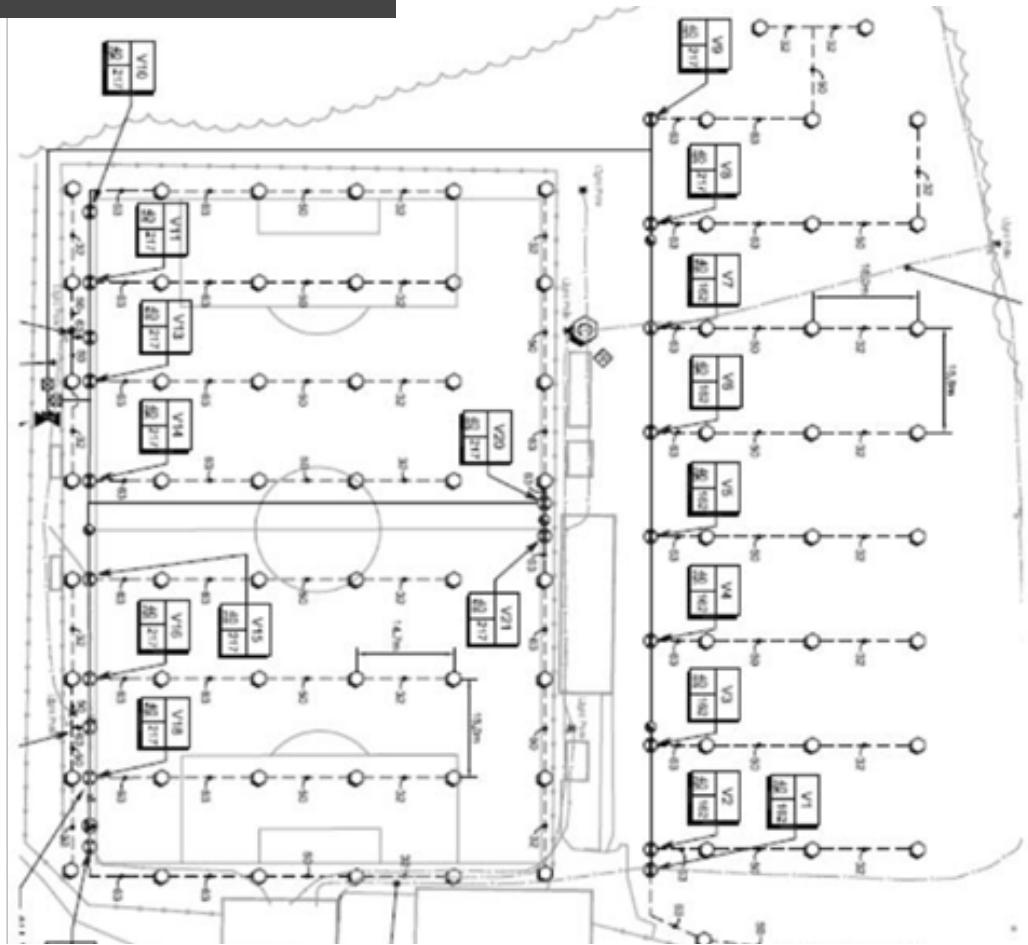
Day 55 _____ Commission and hand over after maintenance period



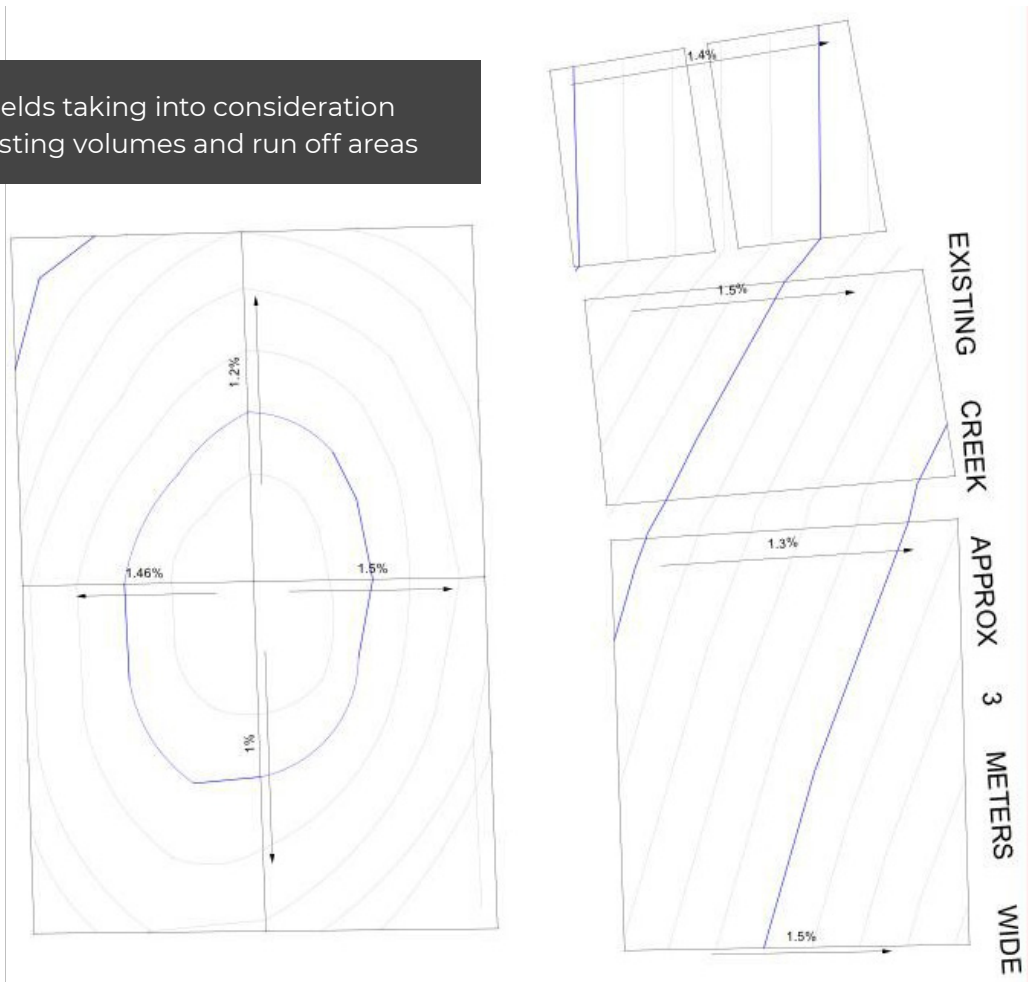
Bleaching of surface after 2 applications of Glyphosate







Final shape of the fields taking into consideration of imported soil, existing volumes and run off areas





2 weeks after turf was installed



The fields in full use

